

Plymasters

What is negative detail?

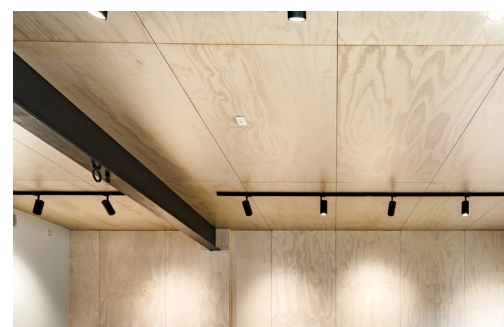
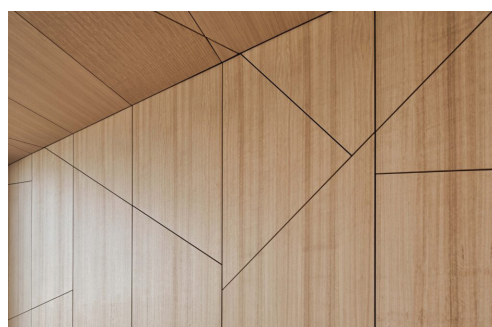
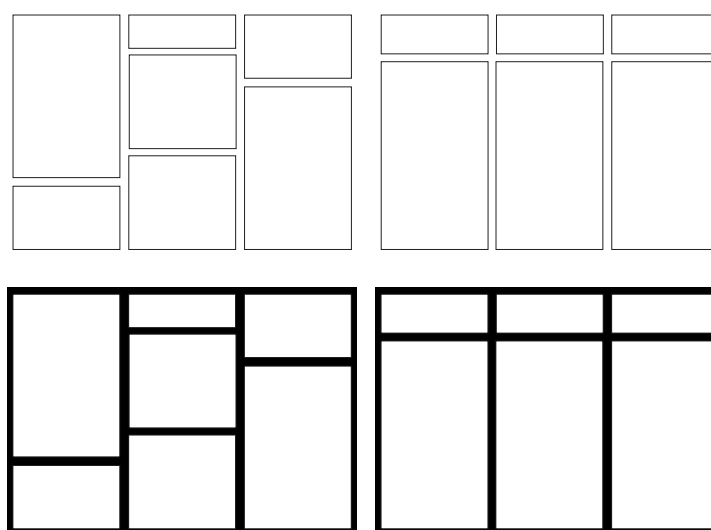
A very modern construction detail when plywood or panels are placed on a wall or ceiling to showcase the blank space between the panels, usually black to create an illusion of the panels floating. Spacing between the panels can be to your taste, however 20mm is roughly the normal width used. With the space between the panels it allows one surface to seemingly float apart from another through the use of a reveal.

Black or coloured tape or foam tape or paint can be used behind the panels where the edges meet. The tape can be glued and pinned onto framing (dwangs, beams or framing) or glued onto construction ply or GIBB. Glue is used as the main adhesive but fine pin nails are also used to hold the panel in place while the glue dries. We recommend Soudal Gorilla Glue.

To prepare the sheets before using, use a small aris to plane down the sides of the plywood to take the sharp edge off, a similar result can be achieved by giving it a light sand.

Placement

On measuring up a wall or ceiling, consideration needs to be taken into how the panels are going to be placed. They can be cut to size and overlaid in a pattern or placed soldier style in a row. Most of our Plymaster Panels are 2440 x 1220mm and thickness's of 9-12mm are ideal for this technique.



Disclaimer: We do recommend the use of a qualified builder to install Plywood and Panels in your home. These directions are here to give you guidance but are not an exhaustive list of application. There are multiple ways to achieve this look, please consult a professional for any queries you may have.