



PLYMASTERS

Plywood & Panels

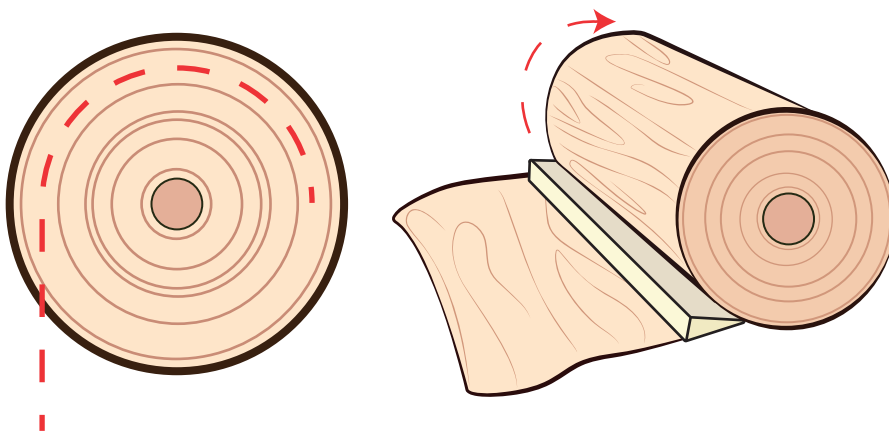
VENEER CUTS

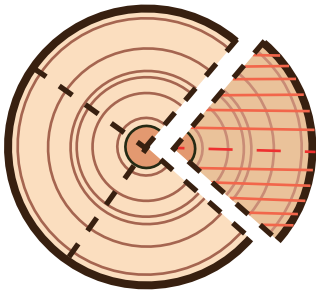
The different grain patterns of veneers are created by cutting the tree through its growth rings in different ways. A rotary cut will create a veneer with an irregular grain whereas a quarter cut will create a veneer with a uniform lined grain.

ROTARY CUT VENEER

A rotary veneer cut is manufactured by rotating the log against a stationary knife. Slicing the log around its circumference, following the annual growth rings.

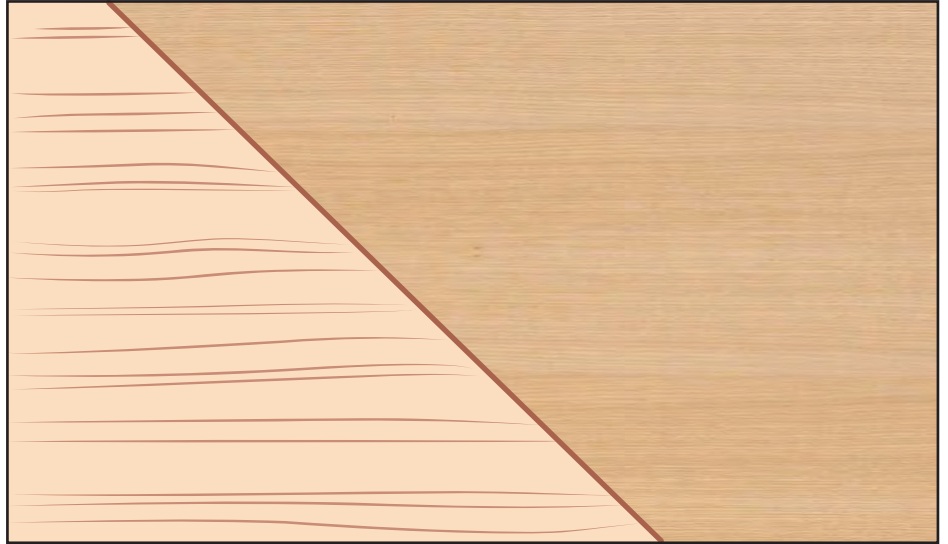
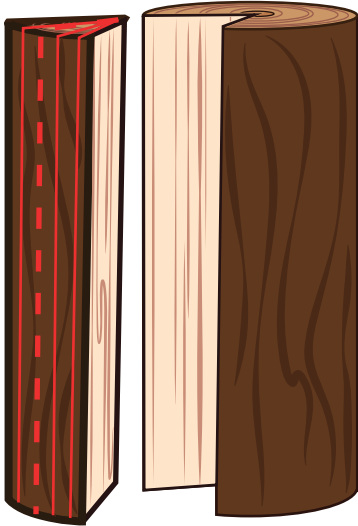
This creates a striking wide grain pattern with irregular patches and streaks. This cut is the most common in the production of plywood.





QUARTER CUT VENEER

When producing a quarter cut veneer the log is cut into quarters and each quarter is straight sliced. These slices are made at right angles to the growth rings. This creates a veneer that has a grain with relatively uniform vertical lines.



CROWN CUT VENEER

The crown cut veneer has a strong, oval-curved grain in the centre with a more subtle, vertical line pattern towards the edges. This veneer is created by cutting the log in half and then slicing the log straight across.

