


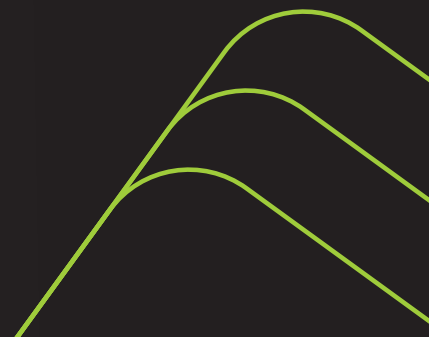


plymasters

MDF Colour Panel

 Plymasters

Coloured MDF panels with colour throughout the thickness of the panel. Great for acoustic panels, routed designs and exposed edge designs.



ColourPanel MDF

Coloured MDF panels with coloured core

Key Features:



Core

E0 MDF Core - Colour Through out



Durability

Moisture Resistant



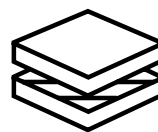
Utility

Tool Friendly



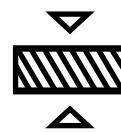
Non Toxic

E0 Emission Rating



Face

Two Faced



Size

2440 x 1220 x 8, 19mm

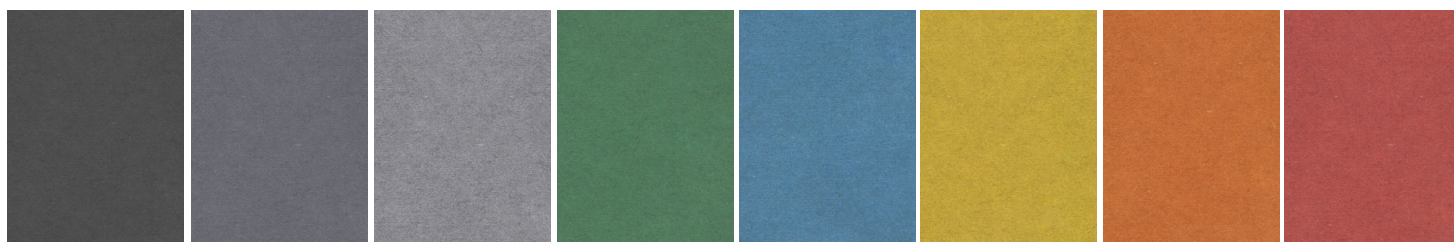
Code	Size	Core	Thickness	Weight	Colour
CPMDF-BLK18	2440 x 1220	Black MDF	8mm	41.45kg	Black
CPMDF-B8	2440 x 1220	Blue MDF	8mm	41.45kg	Blue
CPMDF-DG8	2440 x 1220	Dark Grey MDF	8mm	41.45kg	Dark Grey
CPMDF-G8	2440 x 1220	Green MDF	8mm	41.45kg	Green
CPMDF-LG8	2440 x 1220	Light Grey MDF	8mm	41.45kg	Light Grey
CPMDF-O8	2440 x 1220	Orange MDF	8mm	41.45kg	Orange
CPMDF-Y8	2440 x 1220	Yellow MDF	8mm	41.45kg	Yellow
CPMDF-R8	2440 x 1220	Red MDF	8mm	52.2kg	Red

CPMDF-BLK19	2440 x 1220	Black MDF	19mm	41.45kg	Black
CPMDF-BLK19-FR	2440 x 1220	Black Fire Rated MDF	19mm	41.45kg	Black - Fire Rated
CPMDF-B19	2440 x 1220	Blue MDF	19mm	41.45kg	Blue
CPMDF-DG19	2440 x 1220	Dark Grey MDF	19mm	41.45kg	Dark Grey
CPMDF-G19	2440 x 1220	Green MDF	19mm	41.45kg	Green
CPMDF-LG19	2440 x 1220	Light Grey MDF	19mm	41.45kg	Light Grey
CPMDF-O19	2440 x 1220	Orange MDF	19mm	41.45kg	Orange
CPMDF-Y19	2440 x 1220	Yellow MDF	19mm	41.45kg	Yellow
CPMDF-R19	2440 x 1220	Red MDF	19mm	52.2kg	Red

Scope of Use:

- Furniture
- School and Commercial fit-outs
- Feature wall and ceiling linings
- Kitchens
- Play Spaces

Colour Range:



Black Dark Grey Light Grey Green Blue Yellow Orange Red



ColourPanel MDF

Coloured MDF panels with coloured core

Technical Specs

Core	Coloured MDF
Origin	Korea
Certification	E0 Formaldehyde Emissions Rating

Limitations of use

Not be used in areas directly exposed to moisture.

Application

Despite being a durable product is still vulnerable to moisture. Consequently it is the users responsibility to ensure the edges and faces are sealed with a protective coating to give the product the necessary protection from moisture and for the desired performance. This product will be affected by moisture and temperature. Increased moisture content temperature variation may cause internal stresses causing previously flat sheets to bow.

Handling

At Plymasters, precautions are taken to minimise this effect. However, once the panel has left our warehouse we cannot guarantee sheets to remain flat unless fastened. This is particularly important where free standing kitchen/cabinet doors are concerned. When storing panels, stack on a firm raised base with enough support to prevent sagging. Whenever possible, the panels should be handled using appropriate equipment, such as forklift or panel lifters, etc. When the panels have to be manually moved, they must be moved one by one, in the vertical position, in order to remain level without bending. The panels are heavy, so they should not be moved without a sufficient number of people.

Exposure to sunlight and water

ColourPanel MDF may fade if exposed to direct UV light over a long period of time. The panels may be used in areas with moisture but the edges must be sealed.

Our products can be found on:



masterspec



E BOSS

ARCHIPRO

PRODUCTSPEC
Technical Information



Plymasters.co.nz

Certifications / Performance Attributes



0800 344 112 | sales@plymasters.co.nz | plymasters.co.nz

ColourPanel MDF

Coloured MDF panels with coloured core

Colour Consistency

There can be slight colour difference between ColourPanel MDF sheets in the same batch. Given the difference in shades between panels in the same batch, ensure that you inspect panels before beginning your project. Before starting a job the panels should be arranged side by side, arranging them to try to minimize the differences between adjacent panels. If there are any issues with your panels please contact Plymasters before cutting or altering the panels.

Finishing

A finish should be applied to ColourPanel MDF to protect the surface, keeping its natural look. Varnishes, waxes or oils can be used for the finish. When applied in humid environments, panels should be varnished to maintain their appearance throughout their lifespan and to make it easy to clean them. Fungus and mold stains are more likely to appear in unvarnished panels when placed in humid environments. These stains can be cleaned by sanding the affected surfaces mechanically, but complete removal is not always possible depending on the depth of the stain. Before applying any type of finish, the surfaces of the panels must be properly prepared, removing all dirt, dust and grease.

Surface preparation

In general, all finishes require prior preparation of the surface. It is recommended sand all sides and both faces of the panels, using at least 2 steps with 2 different grains of sandpaper finishing with fine sandpaper. ColourPanel MDF comes factory-sanded with 150 or 180 grain sandpaper, depending on the thickness, so the recommendation for surface preparation is to start with 220 grain sandpaper and finish with 320 grain sandpaper. The tops should also be treated.

The panels may be sanded in the workshop or on the site using an orbital sander. Before applying the finish, the panels should be cleaned with a dry cloth, air blowing or preferably air suction to remove all dust, which could otherwise damage the finish.

Varnish

Any varnish that is suitable for wood can be applied on ColourPanel MDF. Acrylic and Aliphatic Polyurethane varnishes are widely used as they do not turn yellow over time. Water-based varnishes change the natural color of the panel less than solvent-based varnishes.

Fixing

For HPL Plywood we recommend chipboard screws which can be found at your local retailer.



ColourPanel MDF

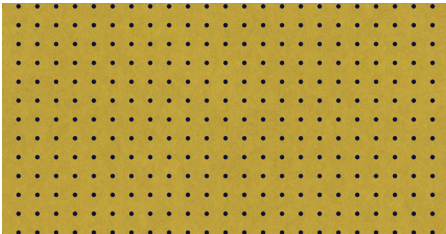
Coloured MDF panels with coloured core

Possible Techniques



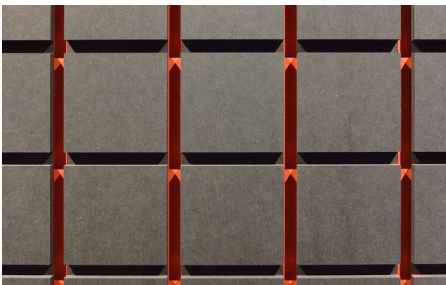
CNC routing

The homogeneity in density and the higher fibers compact level makes it adequate for routing to a higher level of detail.



Acoustic Solutions

Ideal for perforation to sound absorption solutions. The panel shall be bonded to an acoustic felt for sound absorption performance. Micro perforation also possible on ColourPanel MDF.



Laminating

ColourPanel MDF can be laminated or veneered as any other wood fiber board. Recommended sanding the surface before gluing process.



Furniture

Due to higher mechanical properties, the product is ideal to produce furniture by assembling, no needing for screws, or other fixing elements.



