



Plymasters

The Laminate Range

Plymasters range
of HPL & Acrylic Panels







Paton Kitchens

Show Room

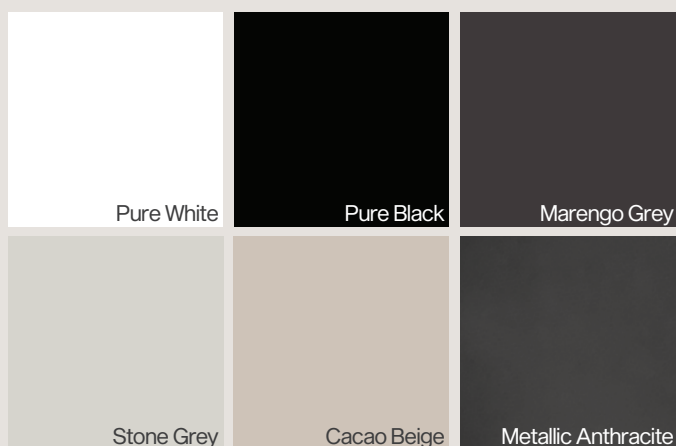
Products: Milled Oak Techno Veneer
& Perfect Matte Marengo Grey
Kitchen Designer: Paton Kitchens
Location: Ngatea, Waikato

Perfect Matte Melaboard

MR-MDF Panels

The Perfect Matte range has a pure matte lacquer hot coating which gives the panels a scratch resistant and anti-fingerprint matte surface. These are our premium range of Melaboard panels, with the perfect soft to touch surface. Edge tapes are available.

Sheet Size	Thickness	Faces	Weight	Core
2440 x 1220	18mm	1Face	46 kg	MR- MDF



MR-MDF



Enviro.
E1 Rating



Origin
Germany

Marengo Grey



Charisma Panels

Acrylic Panels

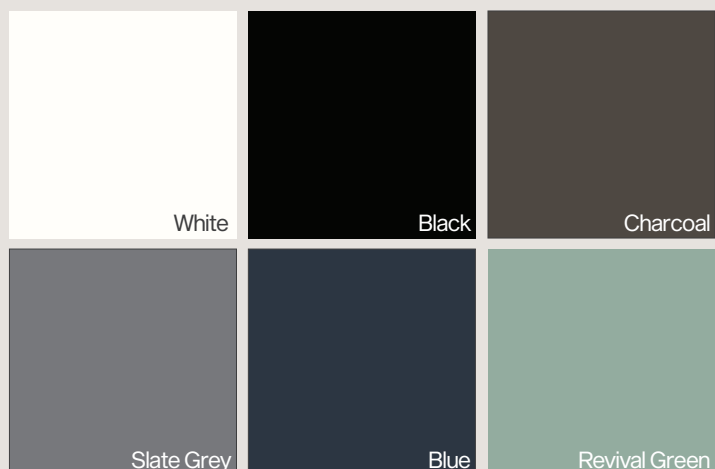
These premium matte hardcoat acrylic panels are UV resistant, anti-fingerprint and have anti-bacterial properties. Their scratch and abrasion resistance is significantly higher than other standard matte surfaces.


Charisma Matte on E0-MDF (2F)


Sheet Size	Thickness	Faces	Weight	Core
2440 x 1220	17.5mm	Dbf. Sided	42 kg	E0 MDF

Charisma Matte on Birch Core

Sheet Size	Thickness	Faces	Weight	Core
2440 x 1220	17.5mm	2F Black only	42 kg	Birch 2F
2440 x 1220	17.5mm	Face Back	42 kg	Birch



 **Glue Bond**
WBP EN34-2
Class 3

 **Hardcoat**
Scratch resist.

 **Origin**
Austria

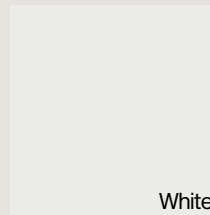
Revival Green

Italia Panels

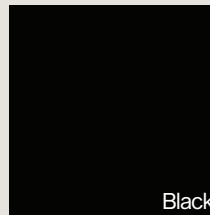
HPL & Birch core

With a light Suede finish and a multiply birch core, this hard-wearing, moisture resistant HPL surface is a favourite with joiners. This double sided panel is excellent for durable, exposed edged cabinetry. With moisture resistant properties, clashing is not needed in many situations.

Sheet Size	Thickness	Lay-up	Weight	Core
2440 x 1220	19mm	13Ply	37.5 kg	HPL Euro
2440 x 1220	25mm	17Ply	52.5 kg	



White



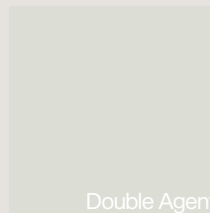
Black



Graphite



Monaco



Double Agent



Agave



Olive Grove



Carezza



Core
Euro Birch
BB Multiply



Certification
FSC, Carb 11,
E1 Rating



Origin
Italy

Aonui Architecture Italia Graphite

Supalam Panels

Carcass grade

Supalam is a hard-wearing carcass plywood which has an exceptional, durable surface with a hardwood ply core that provides greater strength. This cost effective, easy to clean panel has a light embossed finish.

Sheet Size	Thickness	Weight	Grading
2440 x 1220	12mm	22.7 kg	
2440 x 1220	16mm	27.7 kg	Carcass
2440 x 1220	18mm	31.5 kg	



Core
Eucalyptus,
Mixed L/
Hardwood core



Glue Bond
WBP Phenolic



Origin
Italy

Motide Supalam Grey



plymasters.co.nz

0800 344 112

sales@plymasters.co.nz

45 Hinau Street,

Castlecliff,

Whanganui 4501

TERMS & CONDITIONS

For Plymasters full terms and conditions visit - https://plymasters.co.nz/terms_and_conditions



Plymasters

